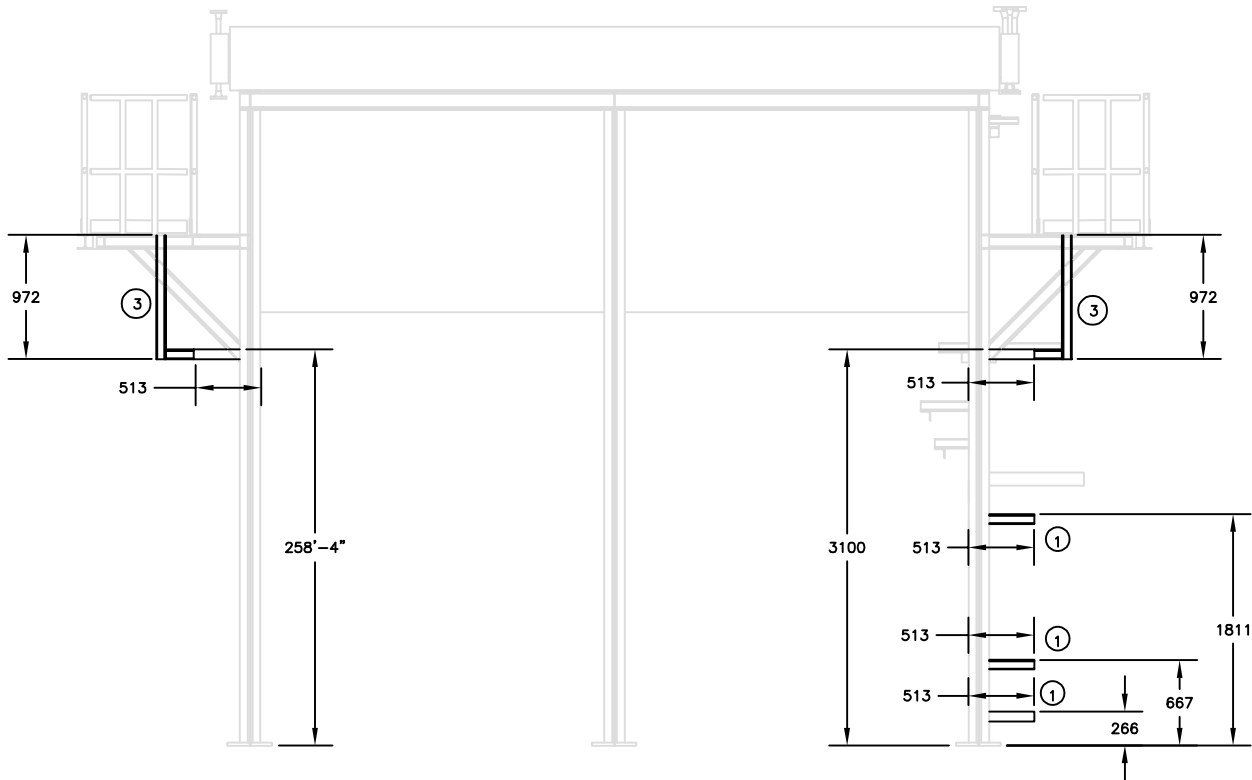
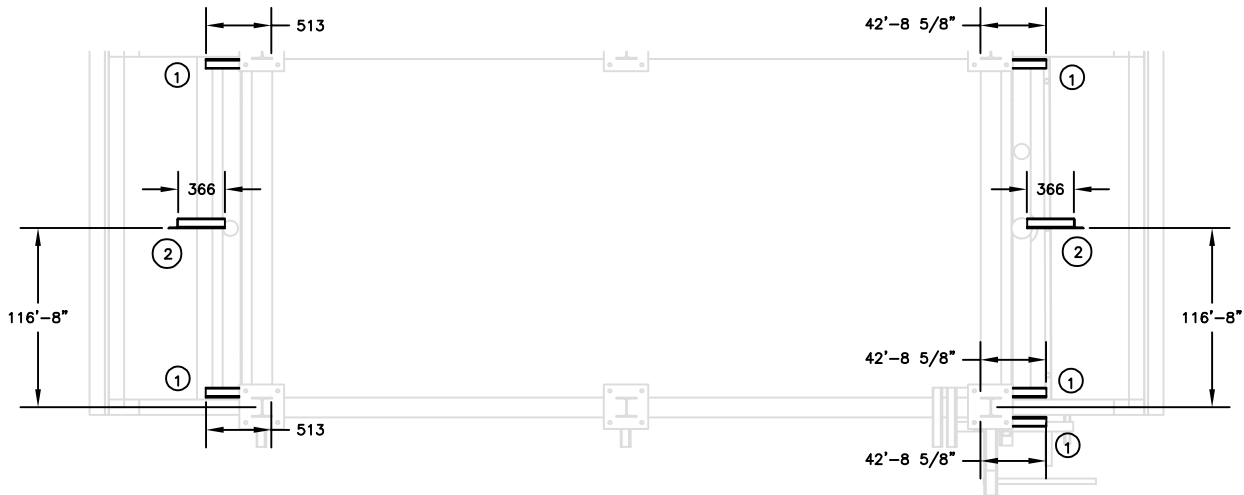


- NOTES:
1. ALL TAPPED BRANCHES TO INCLUDE TWO (2) GUSSETS LOCATED 90° APART.
 2. ALL SUPPORT WELDS SHALL BE CONTINUOUSLY WELDED.
 3. MATERIAL TEST REPORTS ARE REQUIRED.
 4. ALL MATERIALS USED SHALL BE NEW & UNUSED.
 5. ALL HIGHLIGHTED SUPPORTS ARE OF SIZE 3 X 3 X 1/4.
 6. MATERIAL GRADE IS A36 OR EQUIVALENT.

0	F	09.09.24	FOR APPROVAL	AJD	AJD	IES	SES
REV.	STATUS	DATE	PURPOSE OF ISSUE	PREP.	CHKD.	APPD.	AUTH.
CLIENT: SERVICE: LOCATION: UNIT TAG NO.:		ENER TECHNOLOGIA PROPANE REFRIGERATION PACKAGE IRAG RU-001 AB					
VENDOR LOGO							
Contract No.		P.O. No.					
		ENER-MME-2024-100-001		SCALE			
DRAWING TITLE: LOCATION OF CABLE TRAY SUPPORTS ATTACHED TO AIR COOLER							
DRAWING NO. MPE007- 60590-TRAY SPRT				REV.	SHEET No.	SIZE	
				0	1	OF 2	D

Bill of Materials					
Item	Description	Size	Length (mm)	Material	Qty
1	Angle Support	L3x3x1/4	512.624	A36	7
2	Angle Support	L3x3x1/4	366.162	A36	2
3	Angle Support	L3x3x1/4	976.2	A36	2



- NOTES:
1. ALL TAPPED BRANCHES TO INCLUDE TWO (2) GUSSETS LOCATED 90° APART.
 2. ALL SUPPORT WELDS SHALL BE CONTINUOUSLY WELDED.
 3. MATERIAL TEST REPORTS ARE REQUIRED.
 4. ALL MATERIALS USED SHALL BE NEW & UNUSED.
 5. ALL HIGHLIGHTED SUPPORTS ARE OF SIZE 3 X 3 X 1/4.
 6. MATERIAL GRADE IS A36 OR EQUIVALENT.

0	F	09.09.24	FOR APPROVAL	AJD	AJD	IES	SES
REV.	STATUS	DATE	PURPOSE OF ISSUE	PREP.	CHKD.	APPD.	AUTH.
CLIENT: ENER TECHNOLOGI SERVICE: PROPANE REFRIGERATION PACKAGE LOCATION: IRAQ UNIT TAG NO.: RU-001 A/B							
VENDOR LOGO							
Combined No. P.O. No. ENER-MME-2024-100-001							
DRAWING TITLE:				SCALE			
LOCATION OF CABLE TRAY SUPPORTS ATTACHED TO AIR COOLER							
DRAWING NO. MPE007- 60590-TRAY SPRT				REV.	SHEET No.	SIZE	
				0	2	OF 2	D